

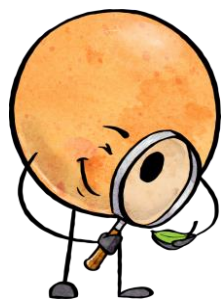
POSITIVE TRAITS, APTITUDES, AND BEHAVIORS OF GIFTED STUDENTS

MOTIVATION: Evidence of desire to learn



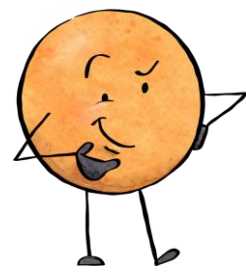
- Demonstrates persistence in pursuing and/or completing self-selected tasks
- Focuses motivation on non-school activities rather than school activities
- Is an enthusiastic learner of non-school or school subject matter
- Aspires to be somebody, do something

INQUIRY: Questions, experiments, explores



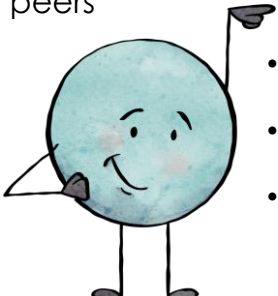
- Asks unusual questions for age
- Plays around with ideas
- Demonstrates extensive exploratory behaviors directed toward eliciting information about materials, devices, or situations

INTERESTS: A feeling of intentness, passion, concern or curiosity about something.



- Demonstrates unusual or advanced interest in a topic or activity
- Is a self-starter
- Pursues an activity unceasingly
- Is beyond age group in activities/interests
- Shows concern for local and global issues

LEADERSHIP: Displays leadership among his/her peers



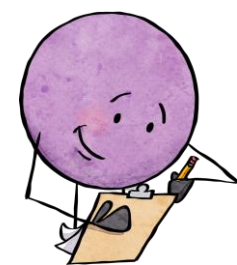
- Is quick to help others
- Carries out responsibilities well
- Leads others on the playground or in other unstructured situations

COMMUNICATION SKILLS: Highly expressive and effective use of words, numbers, symbols



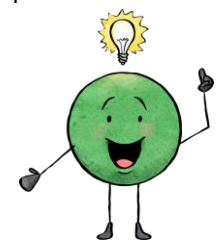
- Demonstrates unusual ability to communicate verbally, physically, artistically, or symbolically
- Uses particularly apt examples, illustrations, or elaborations
- Uses this ability both in or out of the classroom

REASONING: Logical approaches to figuring out solutions



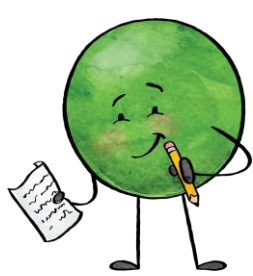
- Makes generalizations
- Uses metaphors and analogies
- Thinks things through in a logical manner
- Thinks critically
- Thinks things through and comes up with plausible answers

PROBLEM-SOLVING ABILITY: Effective, often inventive, strategies for recognizing and solving problems



- Uses effective & often inventive strategies for recognizing and solving problems.
- Is able to change strategies if selected solution doesn't work
- Creates new designs, invents
- Uses this ability in or out of the classroom

IMAGINATION/CREATIVITY: Produces many ideas; highly original



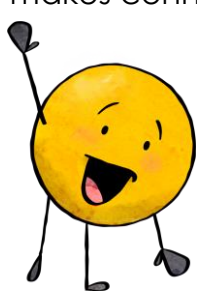
- Shows exceptional ingenuity in using everyday materials
- Has wild, seemingly silly ideas
- Solves problems through non-traditional patterns of thinking
- Produces ideas fluently/flexibly
- Is highly curious
- Displays figural or verbal creativity

HUMOR: Brings two heretofore unrelated ideas or planes of thought together in a recognized relationship



- Has a keen sense of humor
- Has exceptional sense of timing in words or gestures
- Demonstrates unusual emotional depth

INSIGHT: Quickly grasps new concepts and makes connections; senses deeper meanings



- Shows sudden discovery of correct solution following incorrect attempts based primarily on trial and error
- Displays high ability to draw inferences
- Appears to be a good guesser
- Possesses heightened capacity for seeing unusual and diverse relationships
- Integrates ideas and disciplines

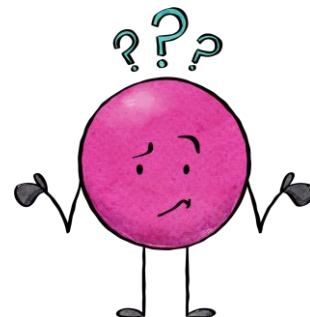
NEGATIVE TRAITS, APTITUDES, AND BEHAVIORS OF GIFTED STUDENTS

MOTIVATION: Evidence of desire to learn



- Easily bored with routine assignments
- May want to do things his/her own way
- Sometimes has difficulty transitioning – may not want to stop a project
- Dislikes interruptions
- May be overly aggressive/challenge authority
- May refuse to do work because he/she already knows it.

INQUIRY: Questions, experiments, explores



- Goes on tangents, can be obnoxious with questions
- Likes to “stump” teacher and classmates with hard questions
- Dominates discussions
- Can become a pest

INTERESTS: A feeling of intentness, passion, concern or curiosity about something.



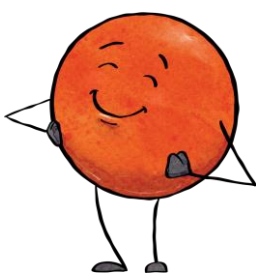
- Reads constantly, often at inappropriate times
- Dominates discussions
- Goes on tangents with no follow-through; appears random
- Loses other students by explaining or over-analyzing issues
- Neglects other responsibilities

LEADERSHIP: Displays leadership among his/her peers



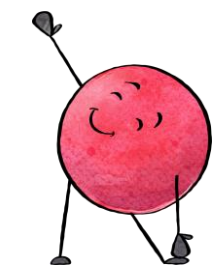
- Becomes bossy
- Unwilling to listen to classmates
- May lead others into negative behavior
- Can be authoritative
- Can be impatient with others and find it difficult to wait for others

COMMUNICATION SKILLS: Highly expressive and effective use of words, numbers, symbols



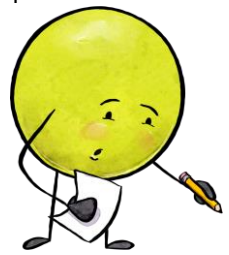
- Shows off
- Creates peer resentment
- Constantly talking to and monopolizing the time of the teacher
- Losing or “turning off” other students with high level vocabulary

REASONING: Logical approaches to figuring out solutions



- Notices everything in the classroom and may appear off task
- Does not readily follow directions
- May overlook details
- May tell the teacher better ways to do things
- Unwilling to show work on math problems

PROBLEM-SOLVING ABILITY: Effective, often inventive, strategies for recognizing and solving problems



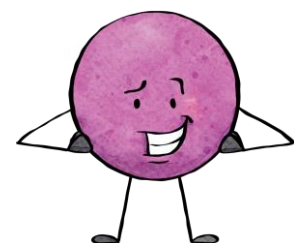
- Interferes with others
- Perfectionistic
- Avoids reflective, divergent responses
- Sometimes too innovative
- Stubborn

IMAGINATION/CREATIVITY: Produces many ideas; highly original



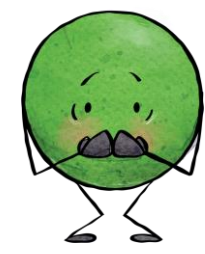
- Gets lost in his/her own thoughts
- Appears to be daydreaming or inattentive
- May not follow-through
- Constantly doodling or drawing

HUMOR: Brings two heretofore unrelated ideas or planes of thought together in a recognized relationship



- Out of synch with classmates and becomes socially isolated
- Makes jokes at the expense of adults or classmates
- Plays cruel tricks on others
- Class clown

INSIGHT: Quickly grasps new concepts and makes connections; senses deeper meanings



- May overlook details
- Out of sync with classmates
- May appear to be showing off or make other classmates feel inadequate
- Impolitely corrects adults
- Overconcern with social problems